

DC-2300: A Brilliant Card Printer



DASCOM®

DASCOM introduces evolutionary technology with the DC-2300 series card printer that adapts to your business needs while helping you be more productive at a cost-effective price.

The printer's direct to card technology generates brilliant, high resolution colors and includes DASCOM Security options with optional watermark capability for enhanced security. These security features help to mitigate compromise of your important business data and cards.

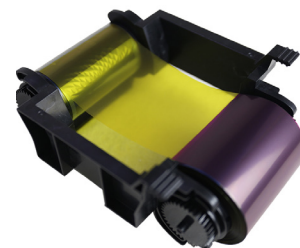
The printer's modular design allows you to print dual-sided cards with an optional duplexer without compromi-

Modular Direct-to-Card Printers at 300 x 1200 DPI

- Space-saving modular design
- Easy to install ribbon cartridge
- High throughput with up to 180 cards per hour
- Excellent print resolution
- Card feeder with 100 card capacity
- Multiple modes of use with optional duplexer

sing its small footprint.

The DC-2300 can be used with other business card software, or as a traditional Windows Printer.



New easy to load ribbon cartridge

Available configurations:

Single-Sided Model - 28.883.6183

Dual-Sided Model - 28.883.6179

DC-2300: A Brilliant Card Printer

Print speed	YMCKO ribbon, single side: 180 cards per hour YMCKO ribbon, double side: 90 cards per hour K ribbon, single side: 450 cards per hour
Resolution	300 dpi. Option to expand the resolution to 300x600 dpi and 300x1200 dpi
Options	Duplexer
Feeder capacity	100 cards (30 mil thick) or Manual feed
Card thickness	20 - 50 mil in the automatic feeder
Printing method	Color dye-sublimation technology
Memory	RAM: 32MB, ROM: 2MB + 4MB
Processor	Integrated Circuit / STMicroelectronics
Graphics processor	FPGA / Lattice Semiconductor
Printing capacity	Photo-quality images
Safety features	Proprietary DASCOM SOC Technology, Custom Watermarks, RFID Encrypted ribbons
Use conditions	Temperature: 0 °C - 40 °C. Humidity: 20 - 65%
Storage conditions	Temperature: -5 °C - 70 °C. Humidity: 35 - 96%
Dimensions	352 mm × 199 mm × 210 mm (13.85 x 7.83 x 8.26 in) (simplex) 400 mm × 199 mm × 210 mm (15.74 × 7.83 × 8.26 in) (duplex)
Weight	6 kg (13.2 lb)
Warranty	3 years
Printhead life	30,000 YMCKO images
Controller	Windows XP, Vista, 7, 8, 10, 11 (32 and 64 bits)
Power supply	100-240 V, 50/60 Hz
Compatible cards	PVC, ABS, PET, PET-G; 85.6 x 53.98 mm (ISO ID-1 / CR-80 size)
Standard interface	USB 2.0, USB host, Ethernet 10/100 Duplex mode
Certifications	FCC SdoC, 2014/53/EU (RED), EMC, UL, CB + LVD, CCC
Card editing software	Dascom CardEditor included. Printer can be used with other other card design software, or as a traditional Windows printer

DASCOM Americas

34 Lakeview Court
Verona, Virginia, 24482 USA
Tel: +1 (877) 434-1377
www.dascomamericas.com
info.us@dascom.com

DASCOM Europe GmbH

Heuweg 3 | 89079 Ulm | GERMANY
Tel.: +49 731 2075-0
Fax: +49 731 2075-100
info@dascom.com
www.dascomeurope.de

DASCOM (Holdings) LTD.

R. 1811-1816A | Nan Fung Centre
264-298 Castle Peak Road
Tuen Wan, N. T. | Hong Kong
Tel.: +852 2498 1507
Fax: +852 2413 6047